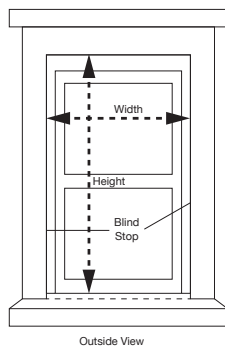




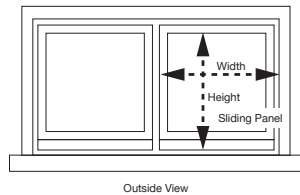
Screen Kit Assembly Instructions

Measuring Windows for Cutting Frames

Wood Window

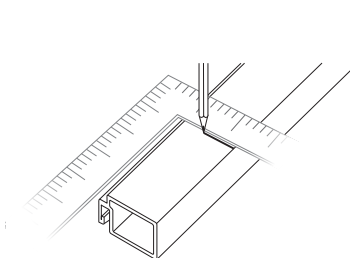


Metal Window

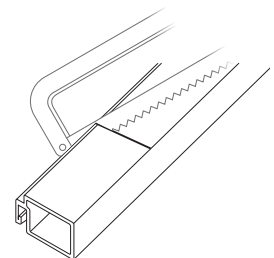


- Measure existing screen if applicable
- Measure width and height to fit against the blind stop and sill.
- Then deduct 1 1/2" from width and height to allow for corner inserts.

Cutting and Assembly of Frames



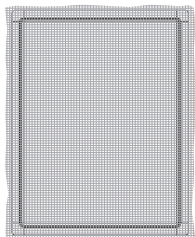
- Use square or square item (such as a book) to mark pieces for straight line cutting.



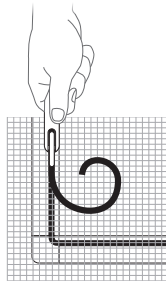
- Carefully cut with a hacksaw (not provided) along marked line.

Applying Screen Cloth to Assembled Frame

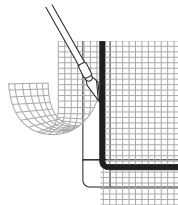
- Place assembled frame with spline grooves up. Center screen cloth over frame.



- Cut screen cloth to overlap all four (4) sides of frame by at least one inch.



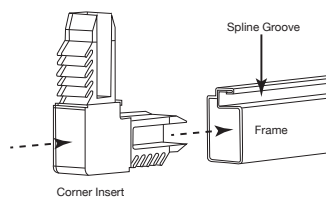
- Start at corner and using a spline roller tool, roll spline into spline groove. Force the screen cloth into the groove. Work around frame ending where you started. Cut off excess spline.



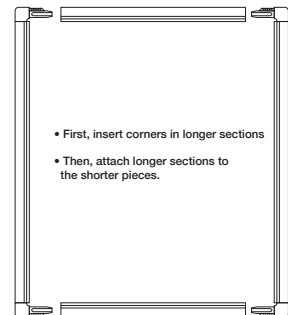
- Trim off excess screen cloth with a sharp utility knife

Assembling Frame Pieces

- Insert corners into frames

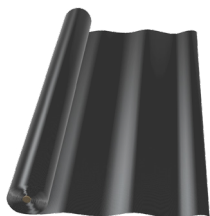


Corner Insert



- First, insert corners in longer sections
- Then, attach longer sections to the shorter pieces.

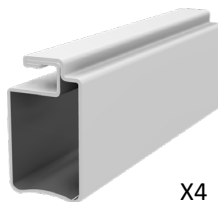
Kit Contains:



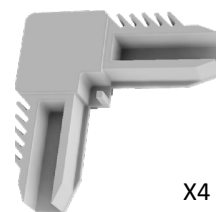
X1



X1



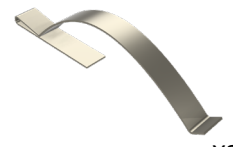
X4



X4



X2



X2



ADDITIONAL ITEMS NEED FOR ASSEMBLY:

- Screen repair tool
- Tape measure
- Hacksaw (to cut frames)
- Utility knife or scissors